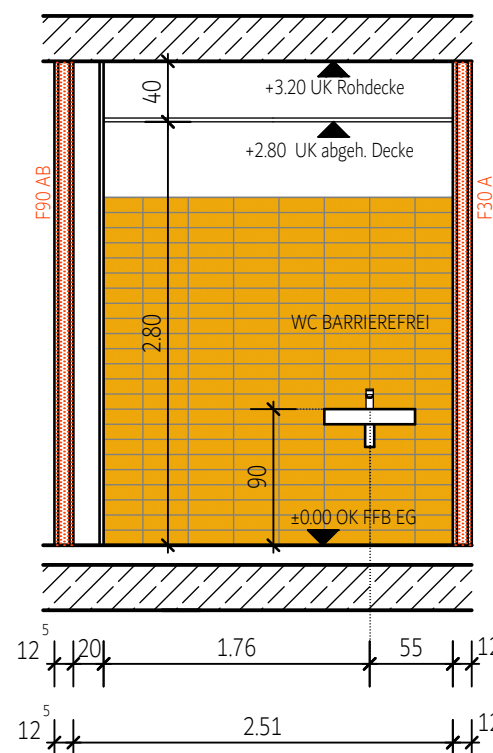


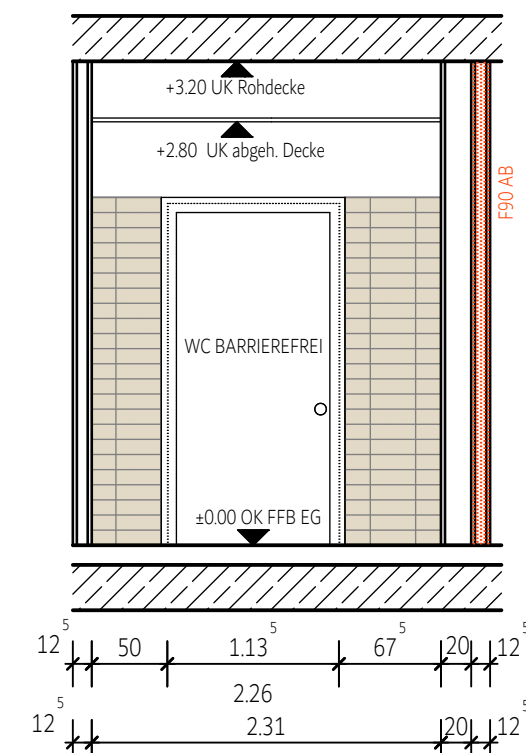
Wand A Putzmittelraum



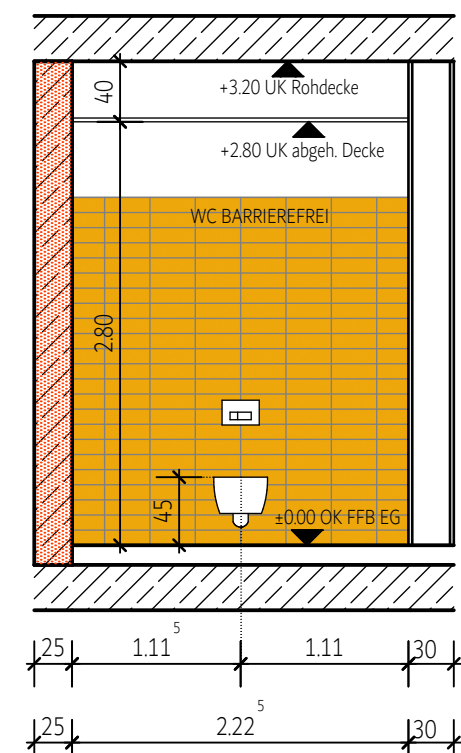
Wand A



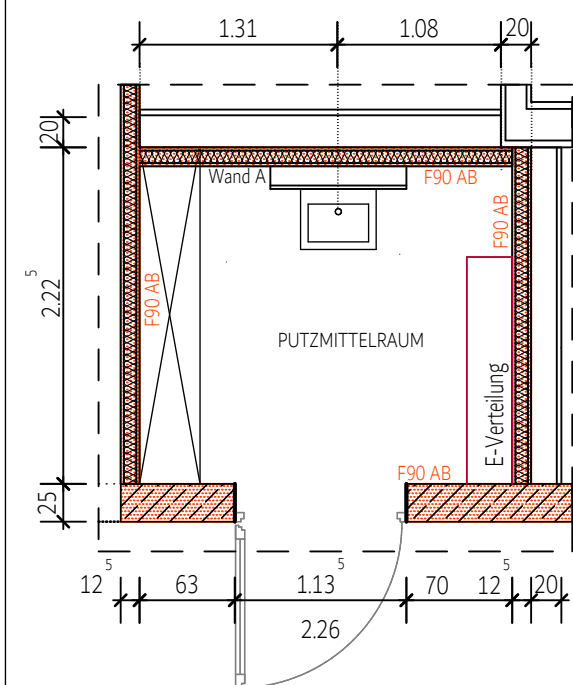
Wand B



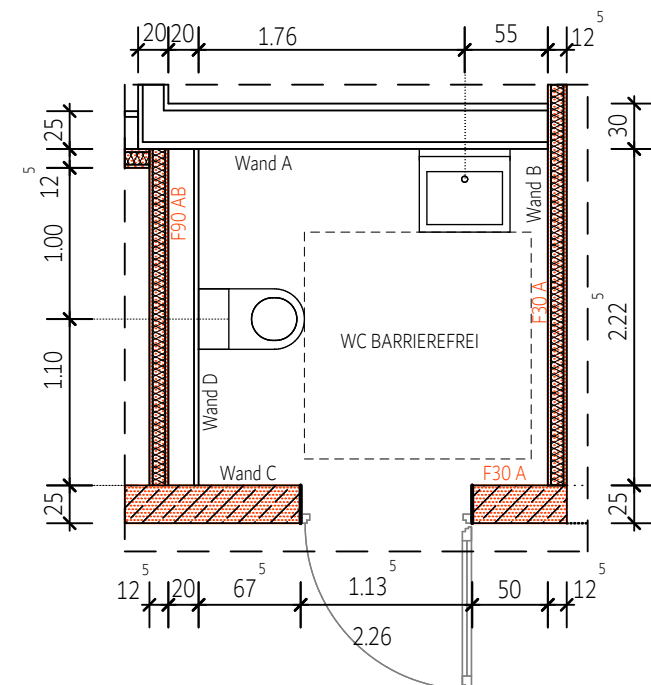
Wand C




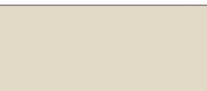
Wand D

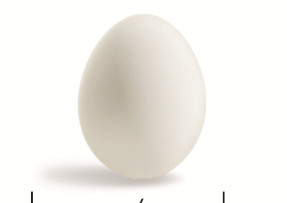


GRUNDRISS
PUTZMITTELRAUM



GRUNDRISS

-  Pro Architectura 3.0 - 10x30 - Mango Yellow
-  Pro Architectura 3.0 - 10x30 - Cream White

BAUVORHABEN	Umbau und Erweiterung eines ehemaligen Gaststättengebäudes zur FGTS Wehrden	 blass/weber : ARCHITEKTEN : PartG mbB
PLANNR. PLANINHALT	29_WPL_Wandabwicklung_Pumi_WC bar. Wandabwicklung_Pumi_WC bar. Index A - 28-04-2026	
DATUM	14.04.2026	
MASZSTAB	M 1/50	

S:\P2020\2020-14 Realschule+BIRLP5_Werkplanung\03_CAD_Pläne_LP5_Werkplanung\Spirt\251117_WPL_Wandabwicklungen